

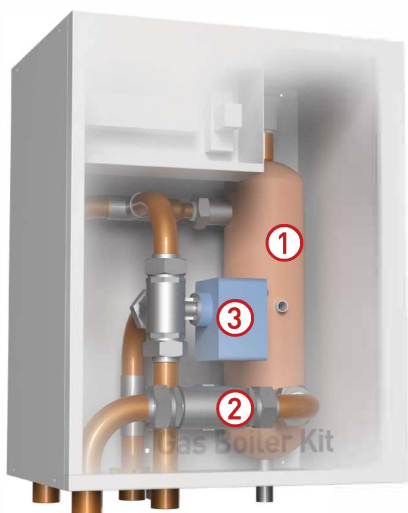
ACCESSORIES

GAS BOILER KIT



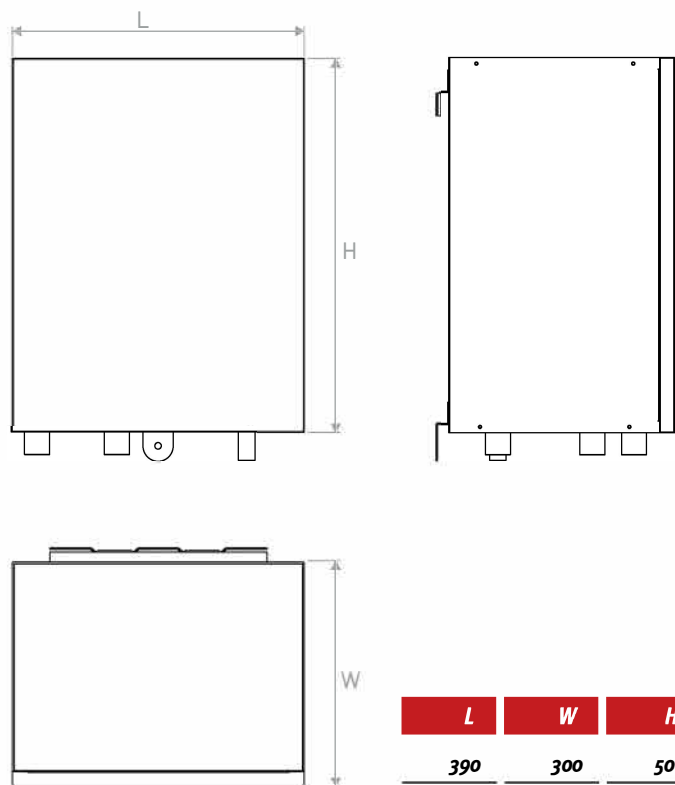
- Use for hybrid system, making the heat pump combinable with a gas boiler.
- Built-in hydraulic separator.
- Built-in motorized 3-way valve for switching between the heat pump and gas boiler.
- Controlled by the heat pump.

3-DIMENSIONAL STRUCTURE



- ① *Hydraulic separator*
- ② *Non-return valve*
- ③ *Motorized 3-way valve*

DIMENSIONS (in mm)



AUXILIARY ELECTRIC HEATER KIT



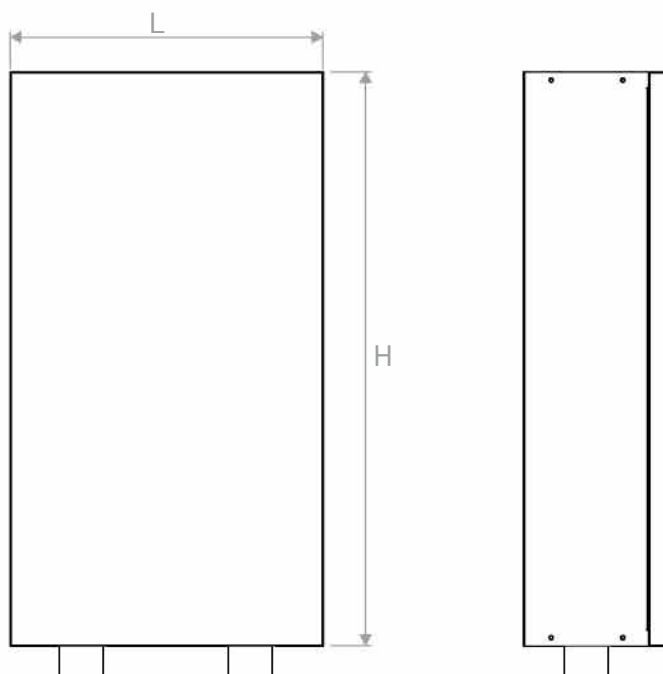
- Auxiliary electric heater for heat pump system.
- Overheating protection.
- 3kW for 230V/1P.
- 6kW for 400V/3P.

3-DIMENSIONAL STRUCTURE



- ① *Electric heater*
- ② *Automatic air vent*

DIMENSIONS (in mm)



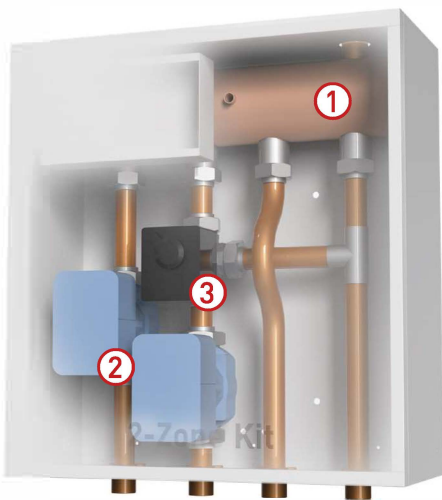
L	W	H
300	140	550

2-ZONE KIT



- Use for the system combined with underfloor heating/cooling, radiators and fan coil units.
- Built-in hydraulic separator.
- Built-in low consumption circulation pumps.
- Two water temperature controls.
- RS485 modbus communication.

3-DIMENSIONAL STRUCTURE



- ① *Hydraulic separator*
- ② *Low consumption circulation pumps*
- ③ *Motorized 3-way mixed valve*

DIMENSIONS (in mm)

